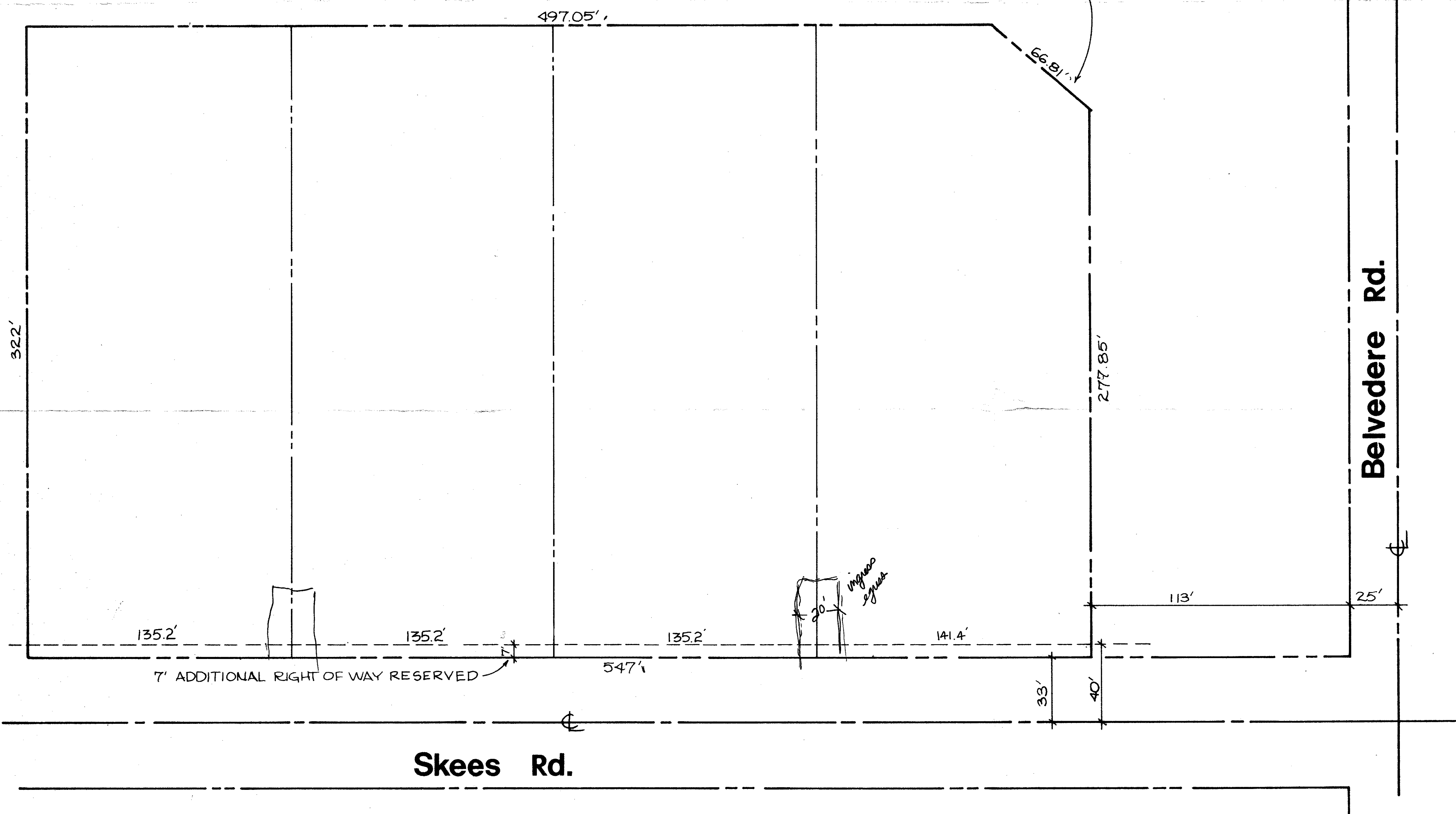
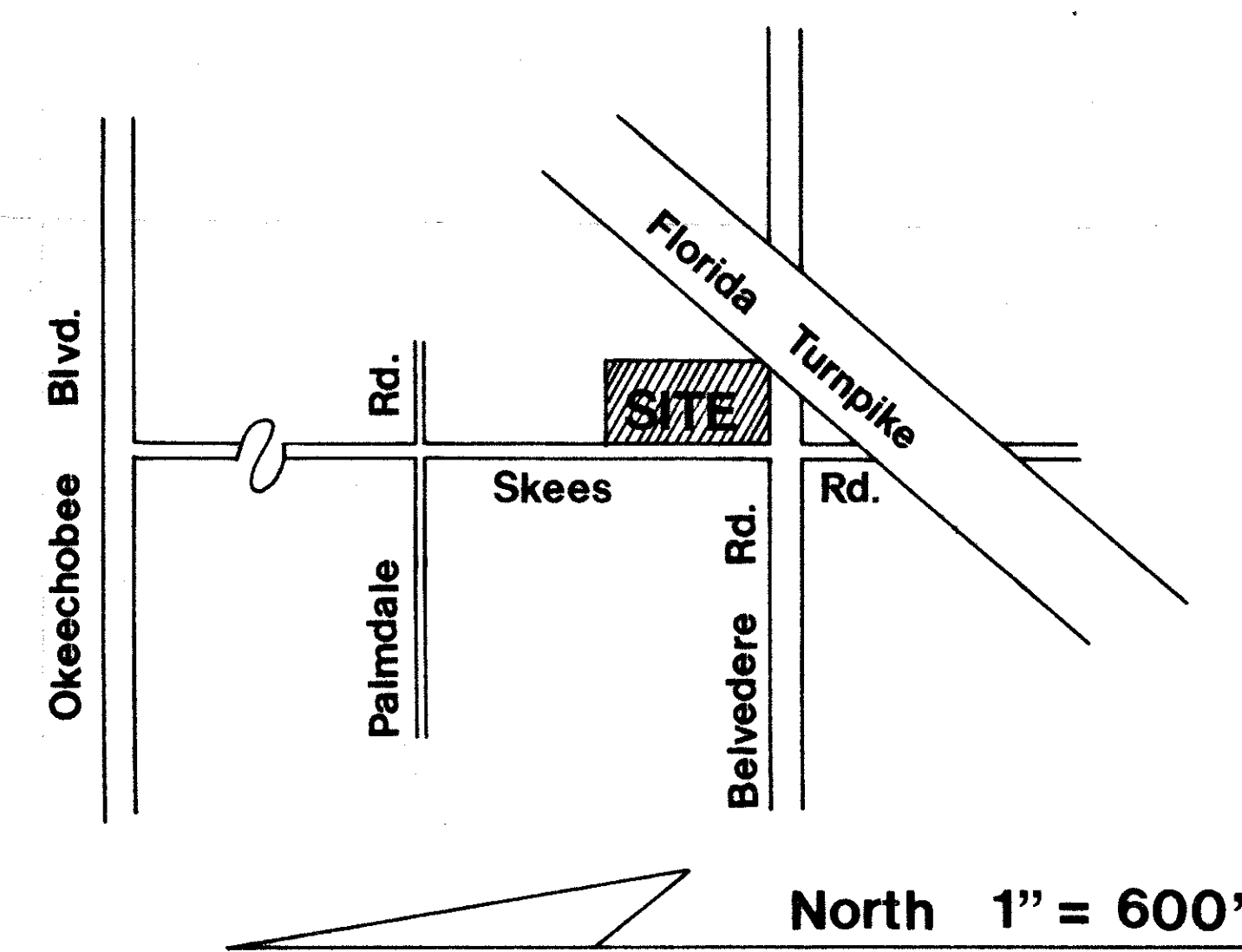


Florida Turnpike Right of Way

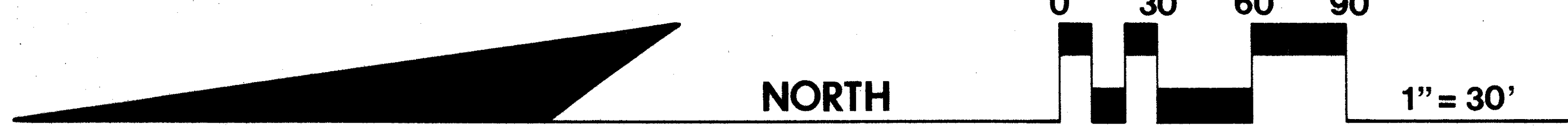


area map



site data

Total Area	175,031.4 sq. ft.
Total No. of Lots	4
Minimum Lot Area	43,560 sq. ft.
Minimum Lot Width	135.2 ft.
Minimum Lot Depth	322 ft.
Zoning	RM - Residential Multifamily (Medium Density)



ur0157.igr
SKEES ACRES

RECEIVED
JUN 4 1981
LAND DEVELOPMENT
PALM BEACH COUNTY

Kieran Kilday, Inc. 2001 Palm Beach Lakes Blvd Suite 203A West Palm Beach, Fl. 33409	<i>Oliver Ames</i>	
	SCALE 1" = 30'	DRAWN BY MVO REVISED 3/19/81
	Ring - Blount	
DATE 8/9/79	APPROVED	DRAWING NUMBER 79-21